

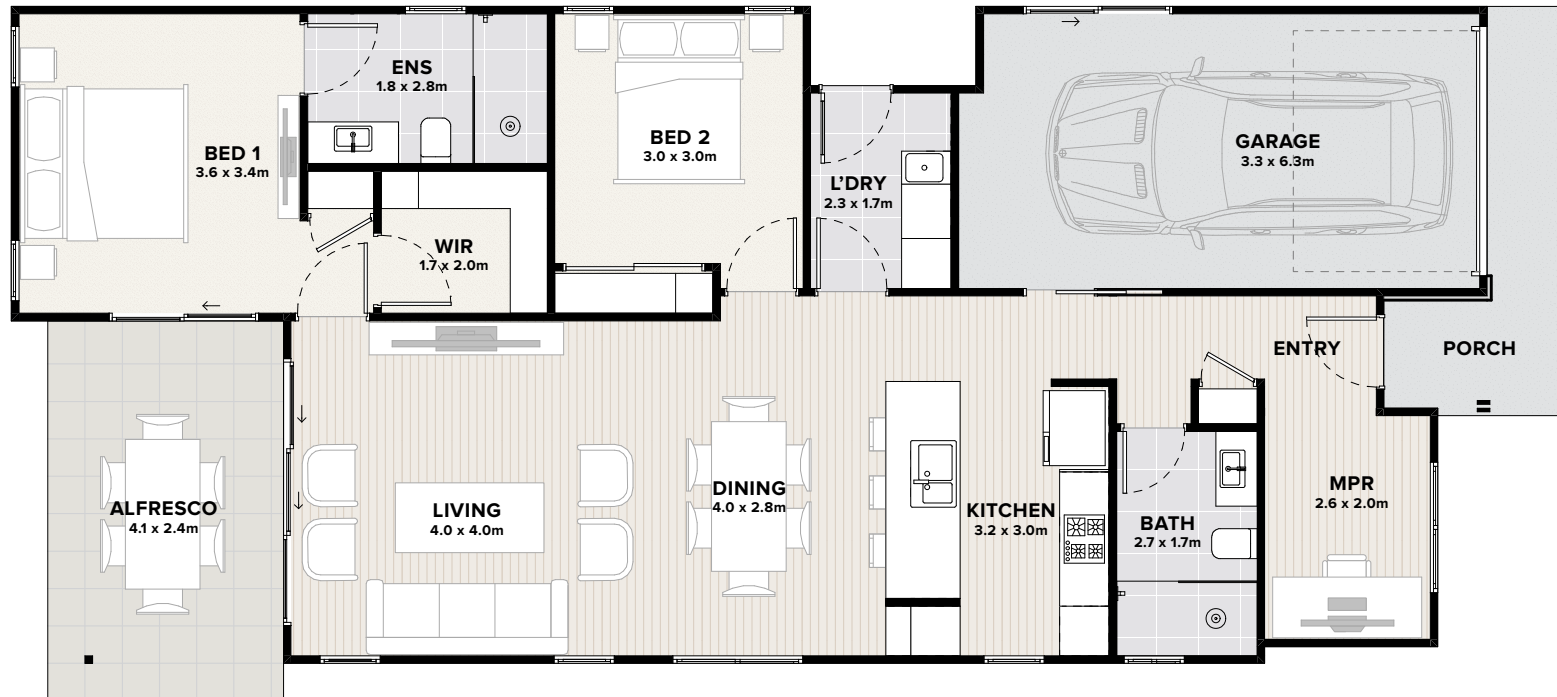
RAZORBACK

2 1 2 1



RAZORBACK | STYLISTED LIVING

 2
  1
  2
  1



A generously proportioned home featuring the best of the best.

The spacious master bedroom feels like a resort retreat with walk-in robe, large ensuite and sliding door connecting to the undercover alfresco.

Open plan living allows you to easily stay connected in each of its spaces with the option to enjoy a drink outside.

The multi-purpose room gives you space for a home office, music room or art studio.

The full-sized laundry connects to a separate drying zone.

FLOORSPACE

Area based on external wall footprint

Living Area	99.2m ²
Alfresco + Porch	11.6m ²
Garage	21.9m ²
Total	132.7m ²

Visit our Sales & Information Centre at 74 Currajong Street, Evans Head

1300 070 928 | thyme.com.au

© Thyme Lifestyle Resort. Thyme Lifestyle Resort reserves the right to change home design and floorplans at any time without notice. Artist impression only. Please note floorplans and designs are not to scale. Not all items shown are included. Refer to schedule for fixtures, fittings and inclusions. Document is for marketing purposes only. V20230316.1